

Glass Door Freezer

Glass Door Freezer

Digitally Controlled Uniform Temperature

* High-Tech Monitor

The monitor digitally displays the present temperature, the evaporator fan working and the door when opened.

Alarm sounds when door is opened for more than 30 seconds.

You can easily adjust the temperature by pressing the button up or down.

* Hardware, insulation and Construction

The strongest wheel available allows for movement and installation.

Our products maintain a constant temperature throughout the unit, even when stocked.

Inside temperature is controlled automatically.

All refrigeration systems are on slide out rails to make maintenance and service easier.

Cabinet body is insulated with 100% foamed-in-place polyurethane foam insulation.

* Door System

To prevent condensation, a transparent three pane heated glass is used.

The door comes with self closing and stay open function.

* Standard Features

- White color cabinet
- White color frame of door
- Three pane heated glass door
- Fully adjustable wire shelves with non-corrosive coating
- A fluorescent light for interior display and advertising effect
- Refrigeration system on slide out rail.
- 4" swivel casters

* **CEC. California Energy Commission Certificated**

* **MEA. City of New York Building Department Approved**



LISTED
COMMERCIAL
REFRIGERATOR
AND/OR FREEZER
43BK



CEC
MEA

ISO9001

TGF-23F



TGF-49F

| Model | Swing Door | CU./FT. | #of Shelves | HP | AMPS | Weight | L D H | List Price |
|---------|------------|---------|-------------|-----|------|--------|--------------------|------------|
| TGF-23F | 1 | 23 | 4 | 3/4 | 8.2 | 375.9 | 27.0 x 31.0 x 83.8 | 6,816.00 |
| TGF-49F | 2 | 49 | 8 | 1.5 | 11.0 | 700 | 54.4 x 31.0 x 83.8 | 9,442.00 |

CABINET INTERIOR/EXTERIOR SPECIFICATIONS

| MODEL | TGF-23F | TGF-49F |
|-------------------------|-----------------------|-----------------------|
| Exterior Dimensions(in) | 27.0x31.0x83.8(WxDxH) | 54.5x31.0x83.8(WxDxH) |
| Interior Dimension(in) | 23.0x26.2x60.4(WxDxH) | 50.5x24.8x60.4(WxDxH) |
| Cubic Feet | 23 cu.ft | 49 cu.ft |
| Compressor | 3/4 HP | 1 1/2 HP |
| Power | 115V 60Hz | 115V/220V |
| Amp | 8.2 A | 11A |
| Plug-in installation | NEMA 5-15p | NEMA L14-20 |
| Shelves | 4EA | 8EA |
| Shelf Size(in) | 21.8x22.5 | 21.8x22.5 |
| Net Weight | 375.9lbs | 700lbs |
| Weight after Packing | 396.8lbs | 745 lbs |

*Design and specifications can be changed without prior notice for product improvement.

* Shelving

The fully adjustable wire shelves are made of heavy gauge metal wire with non-corrosive coating.

* Option

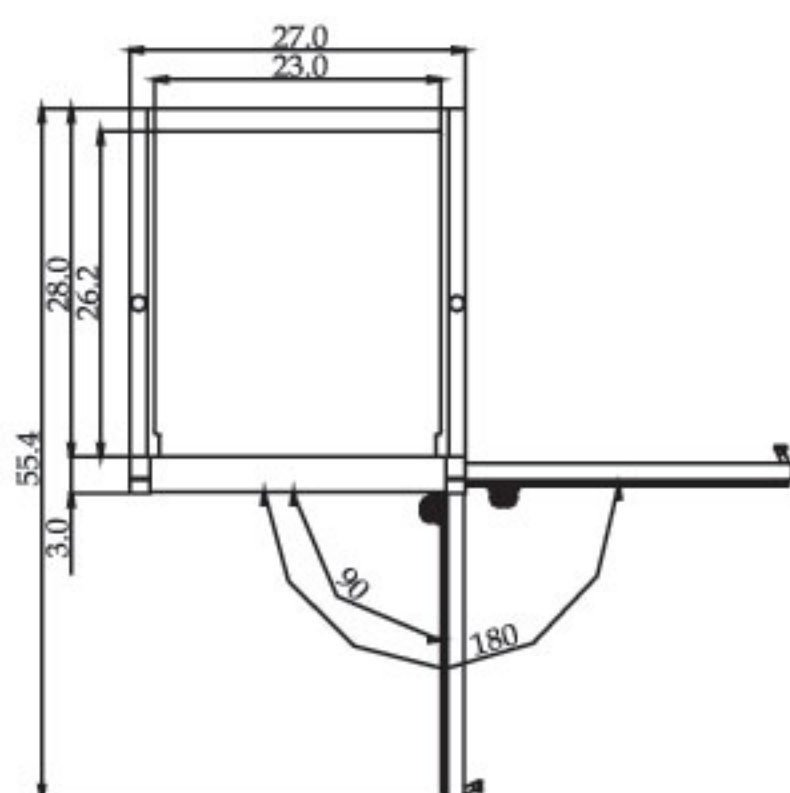
Customized graphics & color available in quantity.

* Holds -15°F~5°F

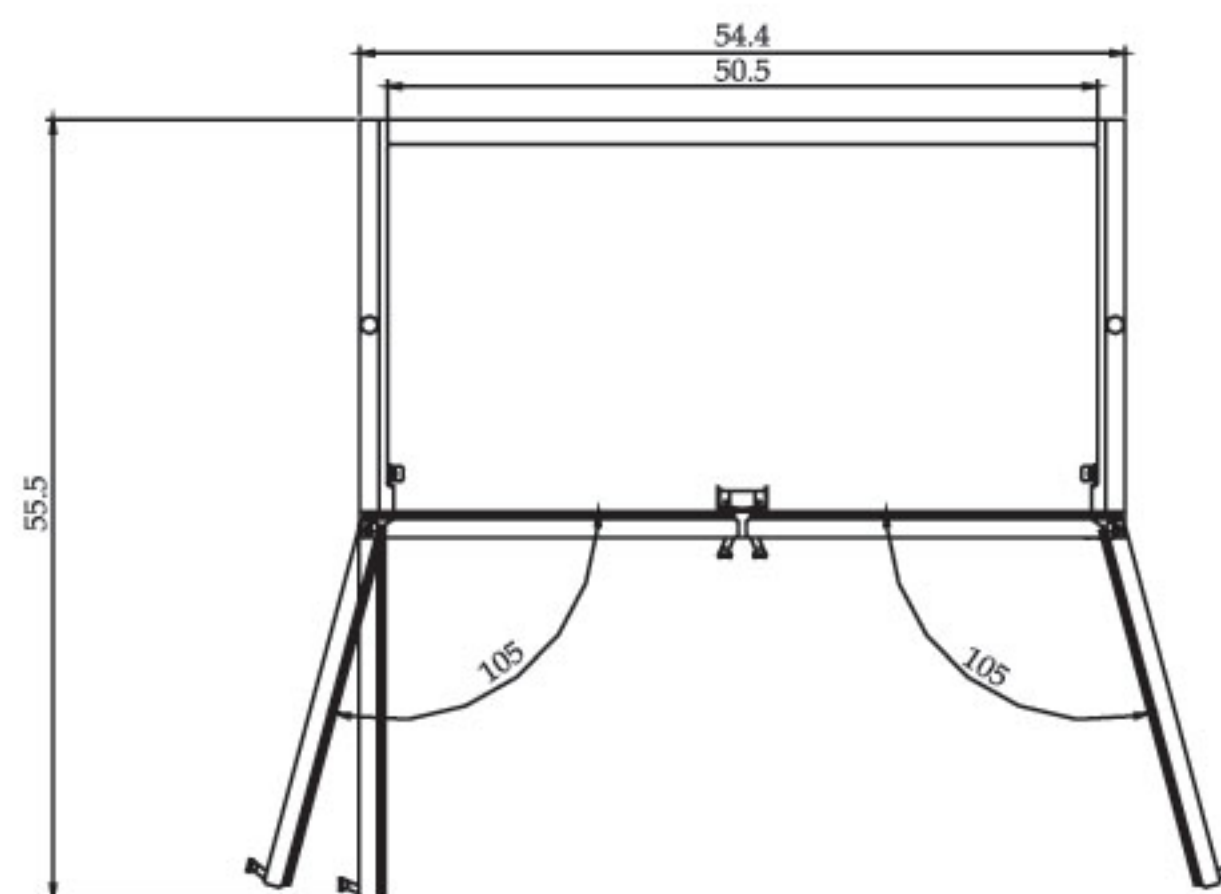
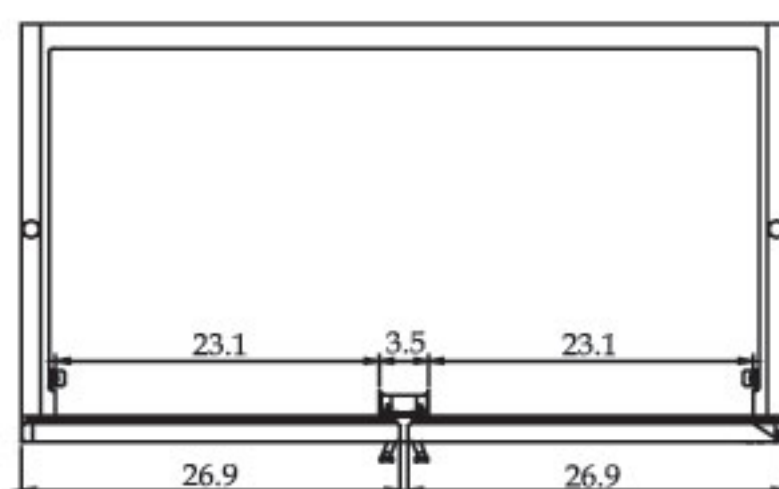
* Foamed With Polyurethane, High-density Cell Insulation (CFC Free)

(unit : inch)

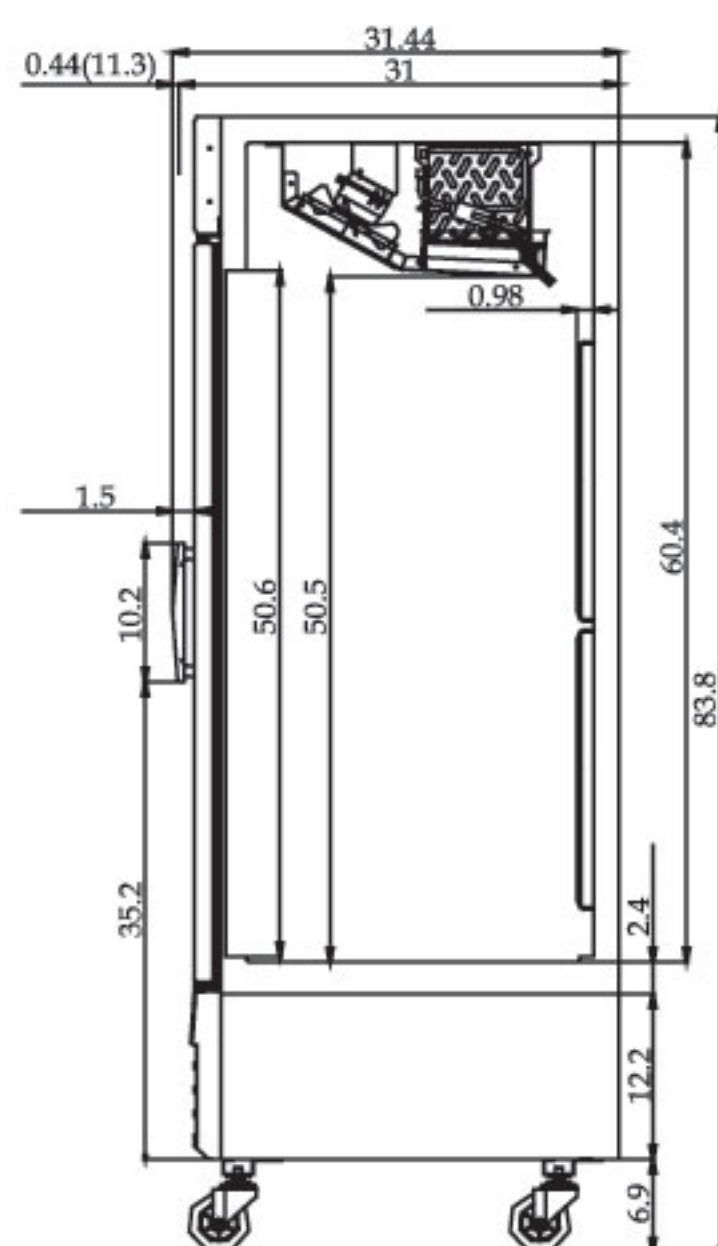
TGF-23F PLAN VIEW



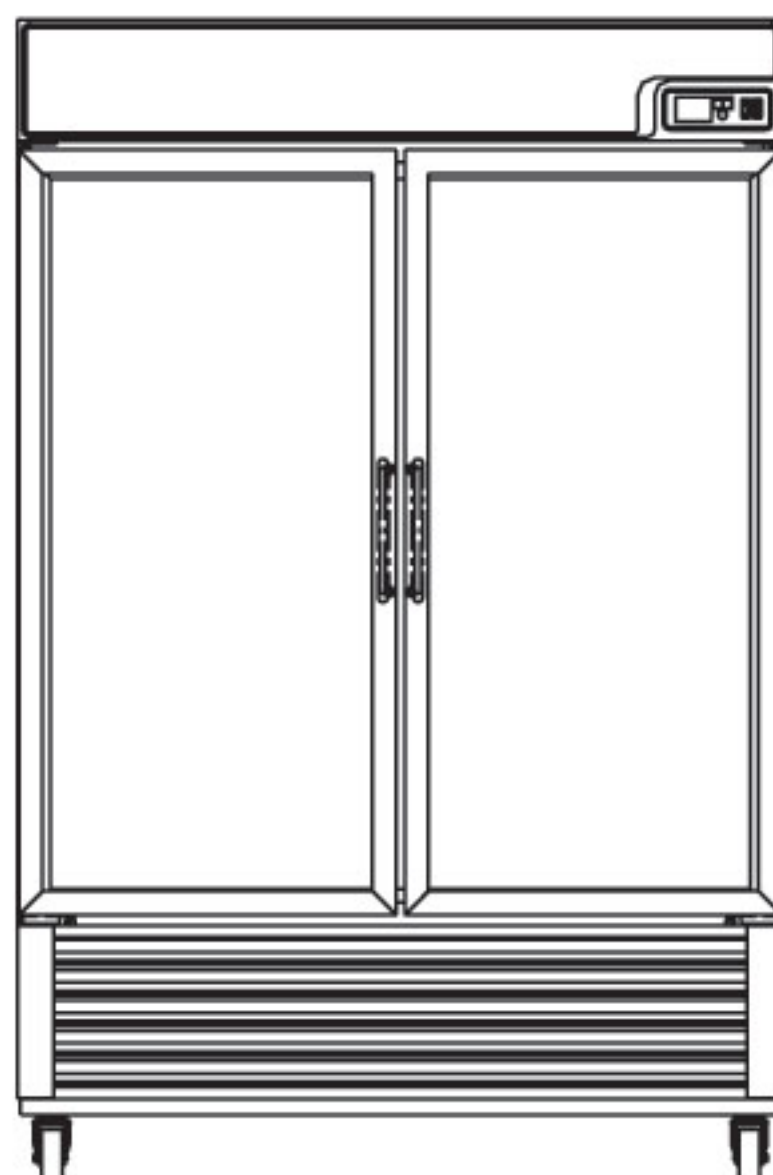
TGF-49F PLAN VIEW



TGF-23F SIDE VIEW



TGF-49F FRONT VIEW



TGF-49F SIDE VIEW

